

# Discovery Reply

## Storage Manager

*Discovery Reply Storage Manager* is a new generation hierarchical storage manager specifically designed for digital media archives, broadcasters and production environments. The solution delivers high-performances in a robust and reliable manner and offers a wide range of format compatibility and configurations, together with connectivity and control flexibility.

*Discovery Reply Storage Manager* leverages its fully integration with *Discovery Reply*, the Media Asset Management platform created by Reply, for an easy access to all system administration and user functions and for process integration and automation.

*Discovery Reply Storage Manager* can integrate top class robotics in a mixed library and mixed media configuration. From direct SCSI connections to Storage Area Network, it consistently delivers its functionalities in a highly configurable and scalable fashion supporting progressive deployment in terms of hardware and software resources.

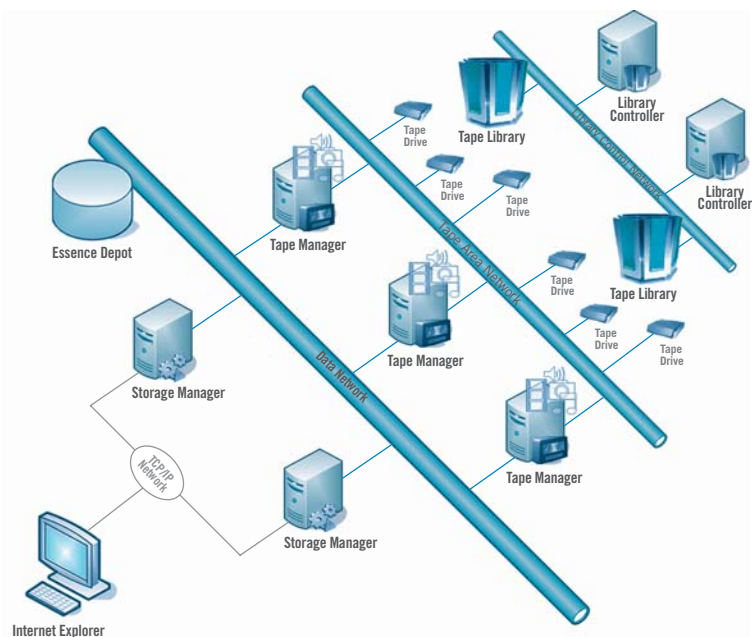
Built upon open standard server architecture, *Discovery Reply Storage Manager* is the cost-effective solution being able to accommodate a variety of storage infrastructures as direct attached, network attached, storage area network or their mix, eventually with distributed shared file systems.

### MAIN FEATURES

- ▶ Vendor independent: it allows to choose among various robotic libraries, network connection and tape drives technologies.
- ▶ *Discovery Reply Storage Manager* supports library partition, multi-library, multi-drive and mixed-media configurations.
- ▶ Advanced Media Management allows to monitor and manage the health status of the media within the library providing automatic error detection, defragmentation and replacement.
- ▶ Policy driven management allows administrators to specify system behavior from a configuration standpoint.
- ▶ Natively integrated with *Discovery Reply*, it can be fully controlled and monitored from a web interface.
- ▶ Integrates with the most advanced storage network environments (e.g. DAS, NAS and SAN).

DATA SHEET

**DISCOVERY**  
Reply **STORAGE MANAGER**



## DISCOVERY REPLY STORAGE MANAGER

### USER INTERFACE

Web Based  
Quick to learn, simple and user friendly  
Support for English, French, Russian and Italian (additional languages on request)

### LIBRARIES

Library partition and multi-libraries configurations  
*Storage TEK* (L20, L40, L80, L180, SL500, L700/L700e, L5500, Powder Horn, SL8500)  
*ADIC* (Scalar 24, Scalar 100, Scalar 1000, i2000, Scalar 10000)  
IBM (3584, 4560)

### TAPE DRIVES

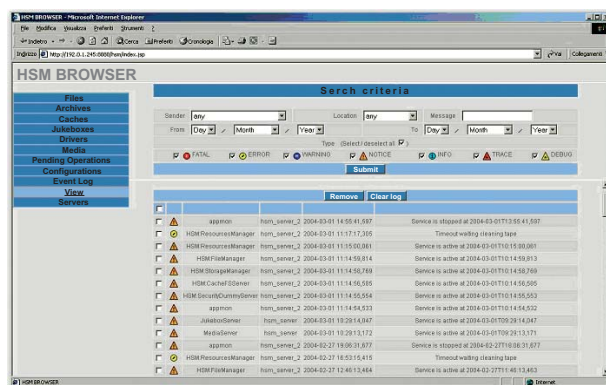
Multi drive and mixed media configurations  
(LTO, LTO-2, LTO-3, SDLT, S-AIT)

### ON-LINE CACHING

The on-line caching assures fast access to material  
*Multiple caches* and migration among caches is controlled via cache policies and usage statistics  
*Delegated cache management* allows for integrating third parties cache management

### POLICIES

Policies are configurable rules to manage the archived material. The policy categories are as follows:  
*Collection*: allows to group files with the same policy  
*Cache In*: allows to specify the cache to use for check-in operations  
*Cache Out*: allows to specify the cache to use for check-out operations  
*Cache Clean*: allows to specify the selection criterion to delete on-line material when space claims occur  
*Cache Dispose*: allows to specify when to start a Cache Clean operation  
*Store Trigger*: allows to specify when to start on line -> near on-line migration routines  
*Media*: allows to specify which media to use for near-line memorization  
*Drive*: allows to specify which drive to use for on-line to near-line migrations



### INTEGRATION

Full integration with *Discovery Reply*  
DAS/NAS/SAN support  
Standard FTP or dedicated SDK/API  
Workflow management systems

### MEDIA & DRIVE MANAGEMENT

*Incremental writing on media* (by using Store Trigger policy)  
*Tapes history log*: any operation on a tape is recorded for maintenance purposes  
*Media defrags*: tapes are sequential access media and removal is not possible unless to rewrite the tape. This means that each time a file is removed from the archive only a logical operation is performed. So if data removal is performed frequently a relevant storage space is lost. Discovery Storage Manager monitors the tapes status and, according to information collected automatically, starts the tape copy when convenient  
*Replacement* of tapes due to age, number of accesses, or recoverable read errors. Each time a tape is fully written, a backup copy can be produced and ejected from the robot  
*Manual / automatic off line drive* for maintenance purposes  
*On line / off line library* for maintenance purposes  
If a fault makes the robot unavailable a *manual procedure* can be activated in order to read and write the tapes using manually the drives inside it  
*Automated Media Migration*: data migration to new media formats when new media drives are introduced into the library



Reply is a leading Consultancy, Systems Integration, Application Management and Business Process Outsourcing company, specialized in the creation and implementation of solutions based on new communication networks and digital media. Reply's offer is aimed at fostering the success of its customers through the introduction of innovation along the whole economic digital chain, thanks to its knowledge of specific solutions and a consolidated experience addressing the main core issues of the various industrial sectors. Reply's model is based on a network structure composed of subsidiary companies, each focusing on specific lines of offer.

Reply [Rey.MI] is listed in the Star segment of the Italian Stock Exchange.

For further information on Reply and its products please visit the corporate website: [www.reply.eu](http://www.reply.eu)

Reply S.p.A.

Corso Francia, 110  
10143 TURIN - Italy  
phone +39.011.7711594  
fax +39.011.7495416

[www.reply.eu](http://www.reply.eu)

2006 Reply S.p.A. All rights reserved. Reply and the corporate logo are trademarks or registered trademarks of Reply S.p.A. throughout the world. All other company and product names are used for identification purposes only may be trademarks of their respective owners. Reply cannot guarantee completion of any future products or product features mentioned in this document, and no reliance should be placed on their availability.